



City of  
*St. Francis*

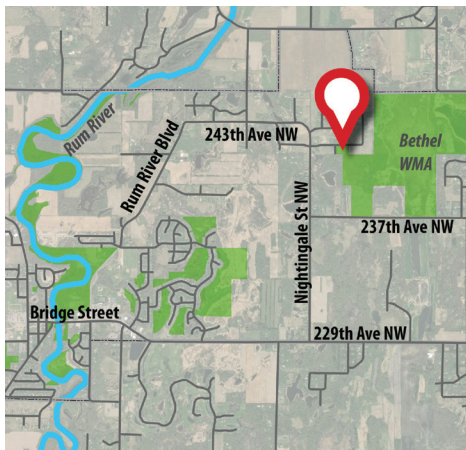
# NEWSLETTER

SUMMER 2019 | VOL. 4, NO. 2



## Outdoor Warning Sirens

The City Council approved the purchase of an additional outdoor warning siren in February 2019. The location of the current sirens are in the area of Roanoke Street/ Ambassador Boulevard and Woodbine Street/232 Avenue NW. The new siren will be installed sometime this summer in city owned green space located in the eastern portion of the city.



### Siren Basics

Outdoor warning sirens exist to warn you to take immediate life-saving action. Sirens are often your last official warning, coming only minutes before a violent

storm hits.

You should understand that outdoor warning sirens warn people who are **outside** that there is immediate danger. You must use other ways to get warning when you are inside structures. A good indoor alert system is a NOAA Weather Radio.

When you hear outdoor warning sirens, it means that you should:

- ▶ Get inside
- ▶ Get information

Get inside means find a sturdy shelter immediately. Go to the lowest level. Find a small room far away from outside windows. Get into a bathtub or other protective place like under a sturdy workbench. Protect your head with a helmet if you can.

### Anoka County

The outdoor warning sirens for Anoka County will sound for tornado warnings (National Weather Service issued), confirmed tornadoes (without warnings) from public safety sources or by request of city/township emergency manager's request (to alert people at outdoor events about incoming weather, high winds, etc).

## Message from your Mayor

Summer is finally here, time to get out and enjoy the outdoors. After this last winter we have definitely earned it!

For those of you on city water, remember water restrictions are in place from May 1 through September 30.

FYI: **Even** addresses water on **even** days and **odd** addresses water on **odd** days. The day **begins** and **ends** at **midnight**. No watering between the hours of 10:00 a.m. and 7:00 p.m.

By now I'm sure all of you have seen the construction for the new Kwik Trip at the intersection of 233rd and Highway 47. The

grand opening is scheduled for Thursday, August 15 at 5:00 a.m.

Recycle Day was on Saturday, April 27. Our city staff did a great job handling 371 vehicles that came through with tires, appliances, electronics, leaves, paper to be shredded and other items. Big thanks to all of our residents that participated in this program.

MnDOT held it's first public meeting on April 23 to get input on the changes needed to make Highway 47 safer. One of those changes is the crosswalk light on Pederson Drive and Highway 47 being

*Continued on page 2*

## INSIDE THIS ISSUE



CLOTHES DRYER SAFETY | PAGE 5



CAR SEAT SAFETY | PAGE 6

PROPERTY ASSESSMENT AREA | PAGE 2

HIGHWAY 47 MEETING | PAGE 3

SEPTIC PUMPING | PAGE 3

WATER SAFETY AT HOME | PAGE 4

RECYCLING EVENTS | PAGE 4

CURFEW LAWS | PAGE 6

PIONEER DAYS | PAGE 7

*Visit us on social media!*



## 2019 Property Assessment Area

By now you should have received the 2019 Taxes Payable and 2019 Valuation Notices from Anoka County. If you have questions about the valuation or the classification of your property, call the city assessor, Erik Skogquist, at 763-412-1966 x700.

Property assessors are required by state law to visit and physically inspect each property once every five years. This year, from April through September, assessors Erik Skogquist and Chris Larson will be working in map section 33, inspecting residential properties. The map section number is the first two numbers of the property identification that is listed on the tax statement or valuation notice. The map where they will be working is outlined below:

If your property is in these areas, here's what you can expect:

- The assessor will come to the property and knock on the door. An inside review of your home may or may not be needed. The decision is based on the information already on file and other factors. If an inside review is needed, it typically takes five to seven minutes (longer for larger structures or multiple buildings). They will walk around the outside of your home to verify exterior characteristics. If an inside review is not needed, they will only walk around the outside of your home (if accessible).
- If no one is there when they visit and an inside review is needed, they will leave an orange door hanger with instructions.
- Characteristics of the property that affect market value are age, square footage, quality of construction, condition, basement finish, etc.
- The assessor will be wearing an official identification badge to identify themselves.



In addition to the five-year residential review areas outlined above, the assessors will visit new construction and permit/remodeling work in all areas of the city. They will also visit some of the commercial, industrial, apartment and mobile home properties throughout the city.

Thank you in advance for your cooperation during this year's assessment review. For questions about assessments or valuations, contact Erik Skogquist at 763-412-1966 x700 or email him at [mnessessorerik@gmail.com](mailto:mnessessorerik@gmail.com).

## Mayor

*Continued from page 1*

replaced with a stoplight. The stoplight is temporary for now until the full redesign of the corridor has been discussed and approved. There are many ideas being discussed as to what are the best improvements that can be made to make this corridor safer. The corridor runs from the Police/Public Works building north to Ambassador Boulevard NW. If you want more information on future meetings and public surveys, go to the city website and hold your cursor on "Our Community." In the lower left corner of the window is a link to the MnDOT website. It will take input from the public, businesses, school district, city, county and state to make this a successful project.

**Pioneer Days** runs from June 7 through June 9. Come out and enjoy the parade and all of the events. Don't forget **Night to Unite** on Tuesday, August 6 from 5:00 p.m. until 8:00 p.m. at Community Park, 22825 St. Francis Boulevard NW.

As I have stated many times before, if you have an issue or concern, the only way the city can address it is if you bring it to our attention. We will research it with full due diligence to give you an honest and fact-based answer. It may not be the answer you want to hear, but it will have been thoroughly looked into. Before you go on social media, please call the city or one of the council members, including myself, in order to get the facts straight on any issue or concern you have. This helps us to serve you better.

Please watch out for children playing as school gets out for the summer and pedestrians walking on the streets and crossing at crosswalks.

Enjoy all of the activities going on and the holidays in summer, but enjoy them safely!

Regards,  
Mayor Feldman

## Animal Control

### Licensing

All dogs must have a dog license issued by the St. Francis Police Department. The license is issued for as long as the rabies vaccine is valid. Owners must provide proof of rabies vaccination. A one to two-year license is \$10 and a three-year license is \$15. The St. Francis Police Department accepts cash, check or credit. Paying by credit does have an additional service charge of 2.75 percent of the total charged plus 50¢.



### Impounded/Lost Dogs

If a dog at large is contained, please call Anoka County Non-Emergency Dispatch at 763-427-1212 and the animal control officer will come to pick up the dog. To retrieve impounded dogs, owners can call North Metro Animal Care and Control at 763-434-7332. The owner will be required to pay impound and maintenance fees upon receipt of the dog.



## Kwik Trip – Open Soon

Construction of the new Kwik Trip is underway and progressing quickly in building their new location in St. Francis. The planned opening date is August 15! Job opportunities are available on their website. Watch for more information to come.



## Highway 47 Public Meetings

Minnesota Department of Transportation (MnDOT) hosted the first of three public open houses on April 23 as part of a planning study on Highway 47 between Cree Street NW and Ambassador Boulevard NW. The study is examining a range of alternatives to address pedestrian, bicycle and motorist safety and movement, as well as the role this corridor plays in the future of the City of St. Francis. MnDOT will be hosting the second open house in the fall to share information about the project propose. The community will have an opportunity to provide input on the initial roadway concepts. For more details about the project, upcoming meetings and to sign up for email updates, visit the Highway 47 St. Francis planning study website at [www.dot.state.mn.us/metro/projects/hwy47stfrancis/index.html](http://www.dot.state.mn.us/metro/projects/hwy47stfrancis/index.html).

## Permits

There are several projects that require either a zoning or building permit. Projects such as decks, sheds, fences and driveways will always require a zoning permit and may require a building permit. If you are planning a summer project, call or check out the city website for more information.



## Septic Pumping

Septic system properties are required to pump and report to the City, no less than every three (3) years. This is based on state statute and enforced through city code. These rules are used to protect our groundwater and reduce the risk for leakage or failing systems causing greater damage to the environment. The City is then required to report this information to the state. Residents can help by ensuring their pumping companies are getting documentation turned in to the City. If your system has failed and you are in need of financial assistance, Anoka County offers well and septic loans through a water quality program. For information, contact Barb McKusick at 763-324-4605.

## Hey Siri...I mean, City!

We all have our ways of getting answers to our questions. We use Siri, Alexa and platforms like Facebook. But did you know the City has opportunities for residents to ask questions as well?

It is out there: bad information, incorrect facts and attempts to mislead. Much of it is due to the lack of understanding and failure to ask the City. Individuals create mistruths about projects, properties, permits and initiatives because the research wasn't done to know the right answer. If you would like to get a question answered, City staff is there to help. There are several ways to ask questions—one being on our website. On the front page there is a "Contact Us" tab that allows you to submit an electronic request. On the website the City also has up-to-date project and property information. There are meetings, packets and minutes that outline what was discussed and what was decided. If you are not one to use the internet, you may call the City and be directed to the department handling the topic of question. Don't be misled by bad information; reach out to Hey City! to learn more.

## Did You Know – Irrigation Systems?

Residents are now required by the State of Minnesota, to have a backflow prevention device installed on their irrigation systems. Residents who have an irrigation system should be testing the backflow prevention device annually.

The 2015 Minnesota Plumbing Code 603.4.2 requires that all testable backflow devices be tested upon installation and at least annually thereafter by a certified backflow assembly tester. Test results should be turned in to the City of St. Francis within 30 days of testing a backflow device. Records will be stored with your property file information.

### What is a backflow device and why do we need one installed?

A backflow prevention device is used to protect potable water supplies (wells and drinking water) from contamination or pollution due to backflow, caused by a sudden drop in pressure in the distribution system. In water supply systems, water is normally maintained at a significant pressure to enable water to flow from the tap, shower or other fixture.



This is **not** an approved backflow prevention device.



## Anoka/Washington County Head Start-Early Head Start Program



### Now Enrolling

Our programs are FREE for eligible families with children from birth to age five and pregnant women. In Anoka County, we offer a variety of options including center-based and home-based programs. Our center-based program offers a four-day school week for children three to five years-old with half-day and full-day options. We offer highly qualified staff, research-based curriculum, parent volunteer opportunities, free meals at school and so much more. Please contact us at 763-783-4300 or visit our website at [www.accap.org](http://www.accap.org).

## Water Safety At Home

Everything you need to know to keep your kids safe in and around water at home.

Whether you're bathing your baby in the sink or splashing around with your toddler in the bathtub, water is great fun for kids. But it's also a place where safety must come first, so here are a few tips for kids who love to get wet.

### Don't Leave Kids Alone In or Around Water

- Never leave your child unattended around water. We know it sounds strict, but there is no room for compromise on this one. Babies can drown in as little as one inch of water.
- Put the cell phone away, forget about all the other things you have to do and give young children 100 percent of your attention when they are near or around water.
- When using inflatable or portable pools, remember to empty them immediately after use. Store them upside down and out of children's reach. These types of pools can pose a drowning risk.



### Remove Water From Tubs and Buckets After Use

- Once bath time is over, immediately drain the tub.
- Empty all tubs, buckets, containers and wading pools immediately after use. Store them upside down and out of children's reach.

### Close Lids and Doors

- Keep toilet lids closed and use toilet seat locks to prevent drowning.
- Keep doors to bathrooms and laundry rooms closed.

### Learn CPR

- Parents have a million things to do, but learning CPR should be on the top of the list. It will give you tremendous peace of mind and the more peace of mind you have as a parent, the better.

Drowning is the leading cause of injury-related death among children between one and four-years-old. And it's the third leading cause of death among children.

For more information visit [safekids.org](http://safekids.org) © 2016 Safe Kids Worldwide®

## 2018 Consumer Consumption Report

The 2018 Consumer Consumption Report is now available at [www.stfrancismn.org/publicworks/page/annual-water-reports](http://www.stfrancismn.org/publicworks/page/annual-water-reports)

Please contact Public Works at 763-233-5200 if you have questions about St. Francis' drinking water. You can also ask for information about how you can take part in decisions that may affect water quality.

## Residential Water Softeners and Chlorides

In areas with high hardness in the water supply, residential water softeners that use salt are common. Hardness is a measure of the calcium and magnesium carbonate concentration in water. Most water softeners use chloride ions to replace the calcium and magnesium ions. Chloride from this salt is delivered to the environment either through discharge to a septic system or by delivery to a wastewater treatment plant. Septic systems become more prevalent in the rural areas outside of the twin cities metro area (TCMA) urban core. The chloride that comes from septic systems enters the shallow groundwater or local streams through subsurface flow. Chloride loading from any individual home water softener is dependent on many variables and is specific to the individual homeowner's water chemistry, water use, hardness preferences, and softener efficiency. Estimates of the amount of



salt discharged from residential water softeners in the TCMA are not available at this time. However, where the primary source of household water is hard and it is not softened by municipal water utility, residential water softeners are the primary source of chloride to wastewater treatment plants.

*Minnesota Pollution Control Agency. Twin Cities Metropolitan Area Chloride Management Plan 02/2016. Retrieved from [www.pca.state.mn.us/sites/default/files/wq-iw11-06ff.pdf](http://www.pca.state.mn.us/sites/default/files/wq-iw11-06ff.pdf)*

## 2019 Recycling Events

July 20 | September 21 | November 16

### Lepage & Sons Recycle Event

9:00 a.m.-Noon

23602 University Ave Ext NW, Bethel

### October 26

### Leaf, Paper Shred, Cardboard Event

8:00 a.m.-Noon

4020 St. Francis Boulevard. NW  
St. Francis

Don't forget these dates!





Doing laundry is most likely part of your every day routine. But did you know how important taking care of your clothes dryer is to the safety of your home? With a few simple safety tips you can help prevent a clothes dryer fire.

- Have your dryer installed and serviced by a professional.
- Do not use the dryer without a lint filter.
- Make sure you clean the lint filter before or after each load of laundry. Remove lint that has collected around the drum.
- Rigid or flexible metal venting material should be used to sustain proper air flow and drying time.
- Make sure the air exhaust vent pipe is not restricted and the outdoor vent flap will open when the dryer is operating. Once a year, or more often if you notice that it is taking longer than normal for your clothes to dry, clean lint out of the vent pipe or have a dryer lint removal service do it for you.
- Keep dryers in good working order. Gas dryers should be inspected by a qualified professional to make sure that the gas line and connection are intact and free of leaks.
- Make sure the right plug and outlet are used and that the machine is connected properly.
- Follow the manufacturer's operating instructions and don't overload your dryer.
- Turn the dryer off if you leave home or when you go to bed.

## FACT!

The leading cause of home clothes dryer fires is failure to clean them.

## And Don't Forget...

Dryers should be properly **grounded**.

Check the **outdoor vent** flap to make sure it is not covered by snow.

Keep the area around your dryer **clear** of things that can burn, like boxes, cleaning supplies and clothing, etc.

Clothes that have come in contact with **flammable substances**, like gasoline, paint thinner, or similar solvents, should be laid outside to dry, then can be washed and dried as usual.

## Construction Sites and Stormwater

When stormwater drains off a construction site, it carries sediment and other pollutants that can harm lakes, streams and wetlands. The U.S. Environmental Protection Agency estimates that 20 to 150 tons of soil per acre are lost every year to stormwater runoff from construction sites.

To protect Minnesota waters, the MS4 permit required by the Minnesota Pollution Control Agency (MPCA), sets regulations for construction site owners and operators to prevent stormwater pollution during and after construction. As part of the City's building permit application, site owners/operators must create a stormwater pollution prevention plan that explains how they will control stormwater. This plan must also be reviewed and approved by our City engineers.

### Current Stormwater Challenges in Construction

The top five construction stormwater permit violations:

- **Missing or inadequate soil stabilization** — Mats, mulches, blankets and other strategies keep disturbed soils in place during construction.
- **Missing silt fence or other perimeter controls** — Perimeter controls such as silt fence and biorolls prevent runoff and allow water through while sediment settles out.
- **Missing or inadequate inlet protection** — Inlet protection captures sediment before it enters storm sewers.
- **Vehicle tracking** — Vehicles driving off the site can track sediment onto paved surfaces. Rock pads/driveways and similar practices knock dirt off tires before it can be carried off the construction site.
- **Stormwater protection practices not maintained** — For instance, it's not enough to just install a silt fence. It must be checked to ensure it hasn't been breached or knocked down.



*Minnesota Pollution Control Agency. Citizen's Guide to Stormwater. Retrieved from [www.pca.state.mn.us/water/citizens-guide-stormwater](http://www.pca.state.mn.us/water/citizens-guide-stormwater)*

Please contact the City of St. Francis at 763-233-5200 if you see any of the above violations happening around construction areas.



### NATIONAL FIRE PROTECTION ASSOCIATION

The leading information and knowledge resource on fire, electrical and related hazards

[nfpa.org/education](http://nfpa.org/education) ©NFPA 2018

## Crosswalk safety tips — slow down

### As a pedestrian...

- Although a crosswalk exists at every intersection, whether marked or not, it is still your responsibility to make sure all vehicles have yielded before stepping into a crosswalk and crossing the roadway.
- Whenever approaching a crosswalk you should remove your earbuds, turn off your music and stop texting or talking on the phone. Be attentive when crossing. Distractions can lead to accidents.
- Make your intention to cross the road known by:
  - ◆ Extending your arm
  - ◆ Illuminating an overhead light
  - ◆ Extending and waving a crosswalk flag
- Make eye contact with the driver. Never assume a driver sees you.
- Be especially alert for turning vehicles. Many vehicle-pedestrian incidents occur with a right-turning vehicle.
- If you are not in a marked crosswalk, as a pedestrian you must yield to all vehicles.

### As a driver...

- Drivers must yield the right of way to pedestrians lawfully in or stopped at a marked crosswalk.
- Stay alert and reduce speed in areas with crosswalks.
- Avoid distractions—using a cell phone, any hand-held device, listening to loud music, reaching for something on the floor, etc. These types of distractions can easily lead to accidents.
- Proactively check for pedestrians. In the same way you use your mirrors to be aware of traffic, check sidewalks and side streets for pedestrians who may be crossing at an upcoming crosswalk.
- Wait until pedestrians have crossed at least one lane past the lane you are in before resuming travel.
- Never pass another vehicle that has stopped or is slowing down at a crosswalk.
- Remember that it is unlawful and unsafe to pass another vehicle on the shoulder, as many pedestrians use the shoulder to walk.



## Car Seat Safety Clinic

Thursday, July 11 • 4:00-7:00 p.m.

### St. Francis Police Department

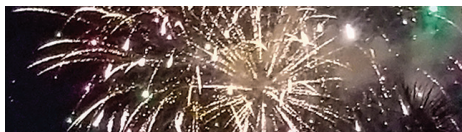
Appointments required; please contact the Community Event Line at 763-267-6195.

Certified child passenger safety technicians will check for recalls and ensure all child restraints are installed by manufacturer specifications.

Each seat check typically takes 30 minutes (per seat, per car) and you will leave confident that you will be able to correctly install the seat and secure your child safely every time!

Please bring:

- Your child for proper fitting
- Your car seats and/or boosters
- Your car's manual (if available)
- Your child restraint device manual
- Your vehicle



## Fireworks dos and don't's

The police understand the desire to show your patriotism through the use of fireworks. Please remember, consumer fireworks may not be used on public property (i.e. parks, roads, alleys, schools, government property, etc.). Purchasers of consumer fireworks must be at least 18 years old. Explosive and aerial fireworks are prohibited for public sale, possession and use. Prohibited fireworks include firecrackers, bottle rockets, missiles, roman candles, mortars and shells. There are several violations that can be enforced in regards to possessing or displaying unlawful fireworks. It is unlawful for any person to use or discharge legal fireworks between the hours of 10:00 p.m. and 8:00 a.m. in the city limits.

If you have any questions, please feel free to contact the St. Francis Police Department at 763-753-1264.

## St. Francis Curfew Laws

Juveniles must abide by city curfew laws, weekdays Sunday through Thursday and weekends Friday and Saturday.

- Juveniles under 12 years of age must be home by 9:00 p.m. on weekdays and 10:00 p.m. on weekends.
- Juveniles 12 to 14 years of age must be home by 10:00 p.m. on weekdays and 11:00 p.m. on weekends.
- Juveniles 15 to 17 years of age must be home by 11:00 p.m. on weekdays and midnight on weekends.

Exceptions to the curfew laws apply when the juvenile is attending, going to or retuning from school, church or community sponsored athletic, musical or social activities.

## Start Seeing Motorcycles

The weather is starting to turn and that means it's time to share the road with everyone. The St. Francis Police Department would like to remind everyone to stay safe on the roadways this summer and "Start Seeing Motorcycles." Please follow these safety tips from the Minnesota Office of Traffic Safety:

- Motorists are advised to watch carefully for motorcycles in traffic and always look twice before turning or changing lanes.
- Riders are advised to wear full, brightly-colored protective gear, including a DOT-approved helmet.
- Riders should travel at safe speeds, pay attention, maintain a two-second following distance and ride sober.
- Riders should seek safety training.

Minnesota Toward Zero Deaths (TZD) is the state's cornerstone traffic safety program.



This program is an interdisciplinary approach to reducing roadway deaths. Our current statewide traffic fatality count is 92 compared to 93 from 2018. Last year Anoka County had 17 and this year we have two.

Results from our last Distracted Driving Campaign April 8-30. These numbers reflect the numbers from Anoka County not statewide.

334 total citations issued

38 seat belt citations, 3 child restraint, 15 DAR/DAS, 97 inattentive driving, 58 texting, 6 warrant arrests, 1 DWI



# St. Francis Pioneer Days

## June 7<sup>th</sup>-9<sup>th</sup>

### Live Music

Community Park Tent

**Friday**

**Party Patrol DJ**

**Saturday**

**The Wonderful World of Woody**

\*\*\*\*\*

**The Fish Tone Rockers**

**Sunday**

**Gravel Roads**



### Volunteer Opportunities

stfrancischamber.org  
763.438.5163



**Advanced Ride Tickets on sale now. Limited Quantities**



**Pony Rides & Petting Zoo**



**University of Minnesota Raptor Center Show**



**Kid Power**  
Pedal Tractor Pulls

**Ages 4-11 sit on a pedal tractor and drag a weighted sled as far as they can go**

**Friday**

**Party Patrol DJ**

**Saturday**

**Grand Parade**

**Raptor Center Show**

**Pony Rides & Petting Zoo**



**Fireworks**

**Saturday, 10 minutes after dusk**

**St. Francis High School**

**Sunday**

**Pony Rides & Petting Zoo**

**Kids Pedal Tractor Pull**



**Carnival All 3 Days**

**Located in Community Park**

Pioneer Days is filled with many community sponsored activities. For details and complete listings please visit [www.stfrancischamber.org/pioneerdays](http://www.stfrancischamber.org/pioneerdays)



23340 Cree Street NW  
St. Francis, MN 55070

PRESORTED  
STANDARD  
U.S. POSTAGE  
**PAID**  
Permit No. 8 St.  
Francis, MN 55070

## ECRWSS POSTAL PATRON

### Events Calendar

**Every Friday, May 17-September 6**

Car Show, St. Francis City Centre Mall, 5:00 p.m.

**May 31** St. Francis Area Schools – Last Day of School

**June 7-9** Pioneer Days

**July 4** Independence Day – *City Offices Closed*

**July 11** Free Car Seat Safety Clinic, St. Francis Police Department  
4:00-7:00 p.m.

**July 20** Recycling Event, LePage and Sons, 9:00 a.m.- noon

**August 6** Night to Unite, 5:00-8:00 p.m.

**September 3** Labor Day – *City Offices Closed*

**September 21** Recycling Event, LePage and Sons 9:00 a.m.- noon

*For a full list of events—visit the city’s website [www.stfrancismn.org](http://www.stfrancismn.org)*

### City Council Meetings

First and third Monday each month at 6:00 p.m.  
(If a holiday, the meeting will be Tuesday.)

### Planning Commission Meetings

Third Wednesday each month at 7:00 p.m.

Meetings are held at  
St. Francis Area Schools District Office  
4115 Ambassador Boulevard NW

Agendas and minutes online: [www.stfrancismn.org](http://www.stfrancismn.org)

### City Hall Location

23340 Cree Street NW  
St. Francis, MN 55070

**Hours** Monday-Thursday 7:00 a.m.-5:30 p.m.  
**Contact Us** [city@stfrancismn.org](mailto:city@stfrancismn.org) 763-753-2630  
**Website** [www.stfrancismn.org](http://www.stfrancismn.org)

### City Council

**Mayor Steve Feldman** 763-235-2310  
**Councilmember Sarah Udvig** 763-235-2311  
**Councilmember Robert Bauer** 763-235-2312  
**Councilmember Kevin Robinson** 763-235-2313  
**Councilmember Joe Muehlbauer** 763-235-2314



**Know  
The Flow!**  
[www.knowtheflow.us](http://www.knowtheflow.us)