



What's Inside

Wastewater Treatment Facility	2
Water Conservation	2
New Stormwater Standards	3
Snowmobile Rules	4
Chamber Currents	6

City Council Members

Steve Kane, Mayor	763-235-2310
Rich Skordahl	763-235-2311
Richard Orpen	763-235-2312
Chris McClish	763-235-2313
Tim Brown	763-235-2314

City Council Meetings

Meetings are held on the 1st and 3rd Monday of the month at 6:00 pm at the ISD 15 Center Services Center, 4115 Ambassador Boulevard NW.

City Office Information

St. Francis City Hall
23340 Cree Street NW
St. Francis, MN 55070
Phone: 763-753-2630
Email: city@stfrancismn.org
Fax: 763-753-9881
Website: www.stfrancismn.org
Hours: 7:00 am - 5:30 pm
Monday - Thursday
(Closed Fridays & Holidays)
Newsletter:
Also available online. Get current and past copies at www.stfrancismn.org



Winter Parking

No parking is permitted on any city street during the months of November until May from 1 a.m. to 11 a.m. or when a snow event is occurring. A snow event occurs when there is a snowfall of 2" or more and ends when the roads have been cleared to full width. Violators will be towed at the owner's expense.

Snow Removal

Residents are asked to follow these steps to ensure service:

- * Please remove cars from the street within 24 hours
- * Remove emptied refuse containers
- * Do not park in front of driveways
- * Do not blow, push or pile snow onto the roadway
- * Use caution and patience with snow plows and their drivers

The first priority is to clear the main thoroughfares to enable emergency vehicles access into and out of the city. Once these have been cleared, crews begin clearing less traveled streets and cul-de-sacs. Generally, it takes about eight hours to plow all of the city streets. Plowing begins at 2 a.m. in order to clear the streets prior to morning rush hour. Sanding trucks work almost every day, spreading a mixture of sand and salt to increase traction and promote melting.

Message from Your Mayor

Neighbors and Friends;

The leaves have turned and fallen and we are looking to the coming of winter. Please remember to drive safely and stay back from the snow plows as they have limited visibility.

Over the last year, Council looked into hiring a Community Economic Development Director. The City currently utilizes an independent firm for these duties, Northwest Associated Consultants (NAC), but has decided to hire our own full-time director. This position will be paid for with funds already being spent for NAC, so it will not adversely impact the budget. This new position will allow full attention to

the development and redevelopment of the city and bring in more jobs. The City has made an offer to and Council approved the hire of Kate Thunstrom, with a start date of November 30. Watch for her employee spotlight in an upcoming newsletter.

Construction has started on the new Wastewater Treatment Facility. The new facility will meet MPCA



Continued on page 3

Wastewater Treatment Facility

Construction began in July of this year. The existing pond four cell was selected as the new site of the Wastewater Treatment Facility. Prior to when construction began, pond four had to be drained of all water. The biosolids that had been accumulating had to be moved to an isolated corner of the wastewater pond as well. Once the area was clear of biosolids, crews began to pour concrete for the floor and walls of the operations building, which will be the control center for the entire wastewater facility. Walls for the two clarifiers were then formed. The clarifiers are essentially circular settling tanks for the continuous removal of solids. Currently, the construction of the aeration tanks is being completed. The concrete for

the floors has been poured and the walls are being framed. Crews are also finishing work on the pilings—this is the loud, repetitive banging sound you may have heard in town—for the biosolids building, which will hold all the unnecessary solids from the clarifiers. After all pilings are driven, a web of rebar will be laid down so concrete can be poured for the floor. We anticipate this to happen within the next few weeks.

The construction crews have taken advantage of the unseasonably spring-like weather we've had recently. Work on the new Wastewater Treatment Plant Facility is moving along with our planned schedule. We are looking forward to providing you with future updates on this project.



www.KnowTheFlow.us

Water Conservation

Water Use Habits		
Water Use	Typical Usage	Water Use Reduction (Saving)
Showering	20-40 gallons (4 gal./min.)	5 gallons (wet, soap up, rinse off)
Teeth Brushing	2+ gallons (faucet running)	1 pint (wet brush, rinse briefly)
Shaving	3-5 gallons (faucet running)	1 gallon (fill basin, rinse briefly)
Hand Dishwashing	20 gallons (faucet running)	5 gallons (wash & rinse in filled sink)
Outdoor Watering	5-10 gallons per minute	Water only when needed (every 5--7 days)
Washing Machine	51 gallons	Do full--load instead of two half--loads
Dishwasher	14 gallons (partially loaded)	Wait until washer is fully loaded
Toilet Flushing	3.5 - 5.5 gallons	1.6 gallons (standard for new toilets)

For More Information...

- ⇒ Contact your city's water utilities department about local water conservation efforts and advice to lower your water bill.
- ⇒ Contact the Anoka Conservation District (763-434-2030) about how you can be *Water Smart* to conserve our water and other natural resources.
- ⇒ Go to the U.S. Environmental Protection Agency WaterSense website (www.epa.gov/watersense) for national programs and initiatives that can save you money and make your home/business water efficient.

Pushing Snow Across the Roadway is Illegal

While clearing your driveway isn't a crime, the way you clear it can be. According to Minnesota Statute 160.2715, "(a) Except for the actions of the road authorities, their agents, employees, contractors, and utilities in carrying out their duties imposed by law or contract, and except as herein provided, it shall be unlawful to:

- (1) obstruct any highway or deposit snow or ice thereon and (b) Any violation of this section is a misdemeanor." What this means is you can't push snow across the road or into the street to get it out of your driveway. The law is very specific on this issue. You can get fined for pushing snow across the road, whether it is state road, county road or city road. Violations are misdemeanors, but civil penalties would also apply if the placement of snow creates a hazard such as a slippery area, frozen rut or bump that contributes to a motor vehicle or pedestrian crash. The civil liability can extend to both the property owner and the person who placed the snow.

New Stormwater Standards

Due to new stormwater quality standards set by the EPA, the City of St. Francis and many similar cities have been identified as a Municipal Separate Storm Sewer System (MS4). Newly identified MS4 cities are required to apply for a MS4 general permit. The MS4 general permit is mandated by the federal regulations under the Clean Water Act and is administered by the Minnesota Pollution Control Agency (MPCA).

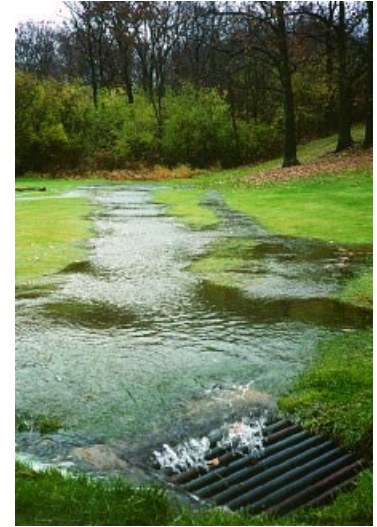
A MS4 is a publicly owned or operated stormwater infrastructure, used solely for stormwater. Examples of stormwater infrastructure include curbs, ditches, culverts, stormwater ponds and storm sewer pipes. The MS4 general permit focuses on reducing pollution that enters these public systems and discharges to wetlands, stream and lakes.

The MS4 general permit requires the owner or operator to create a Stormwater Pollution

Prevention Program which focuses on public education, public participation, illicit discharges, construction and post-construction site runoff controls, and pollution prevention and municipal “good housekeeping”.

Although the MS4 general permit is a requirement, it is also a tool to improve local water quality within the City of St. Francis. Improving water quality can seem like an insurmountable task, but small efforts that all residents can make will have a dramatic effect. Simple steps for better water quality include:

- Fertilize established lawns with phosphorous-free fertilizer and don't overspray fertilizer into the street.
- Rake leaves and sweep grass clippings away from curbs. Clean curbs mean clean water.
- Direct your home's gutters onto your lawn. Water that doesn't make it to the curb can't carry pollutants to lakes and streams.



For more detailed information about the MS4 general permit, or for further information about reducing stormwater pollution, visit www.pca.state.mn.us/stormwater.

Starting in 2016, each parcel will be billed \$5/month or \$60.00 per year for the implementation of this new requirement.

Message From Your Mayor (con't)

requirements and allow for growth in our community. This expansion has already helped the City pursue several new and exciting developments.

On November 2nd, the City Council approved a plan for an 89-unit assisted living facility to be located on the north side of 229th Avenue between the American Legion and The Ponds Golf Course. This facility is proposed with memory care and transitional care facilities. Transitional care facilities will allow for area residents to stay in a facility locally before and after hospital stays. The City had heard from residents who thought we needed a facility like this and even commissioned a market study. The Council is very pleased to have been able to work with the developer to bring this project forward. Construction should be starting later this year or early in the spring of 2016. This facility will bring over 50 jobs to the community.

In July, the City also entered into a contract with Meridian Behavioral Health to allow for the construction of a behavioral health center on property located at 229th Avenue and Cree Street off of Highway 47. This facility will serve almost 50 patients in a residential setting. Meridian has facilities throughout the metro area and is well regarded in the industry. They are slated to begin construction next spring. This center will also bring about 50 jobs to the city.

In 2015, the City also has had 28 new houses begin construction. This is up from 15 in 2014 and 9 in 2013. If this trend continues, we could see a lot of new construction in the city in 2016.

A new restaurant is coming to town! Checkers will be opening soon in the SuperAmerica location on the corner of county roads 9 & 24. You may have also noticed our new car dealership. Rum River

Auto Sales is located on Highway 47 just south of Ambassador Blvd.

Quarterly Spotlight: Anna Anderson, Administrative Assistant, City Hall

The first smiling face you encounter when entering City Hall is that of Anna. She started working for the city in June of 2014 in an office support position. She will be providing support to our new Community Economic Development Director as well as other departments. Anna recently updated the city website to be more user-friendly and appealing. In her spare time, Anna enjoys refinishing furniture, painting and Googling. Anna and her husband have recently started a non-profit organization to support treatments and find a cure for their daughter.

I invite you all to “Like” us on Facebook and visit our website to stay up-to-date with current city news.

Your Mayor, Steve Kane
skane@stfrancismn.org

Building Department

We all realize winter will eventually find us, but that doesn't stop the enjoyment of this incredibly mild fall.

Even as time runs short, we will prioritize our outside projects and work towards completion. There appears to be enough weather left for that deck, detached garage, or even new house before the truly cold weather sets in.

Building Department staff would like to remind you that careful planning and securing the necessary permits goes a long way in preserving your property values and ensuring state guidelines are met for general life safety elements of your home or business.

Early in 2015, the State of Minnesota adopted a new building and energy code aimed at incorporating new technologies and building techniques that help save money, as well as reduce injuries and, in some cases, even save lives. The entire code language is available on the State website located at <http://www.dli.mn.gov/Ccld.asp>.

You may have noticed an increase in building activity this year, especially in the area of new home construction. Building permits are up approximately 27%, with nearly twice as many new homes built compared to 2014. These dwellings were split between city lots and those with on-site septic systems.



Speaking of rural lots, getting ready for winter incorporates a different "to do" list for those with their own well and sewage treatment system.

The first task is to simply know where it is so you can observe surface conditions and make sure it is accessible when the time comes for scheduled maintenance or emergency repairs. Next is to provide some level of protection over your septic tank. This can be accomplished by letting the

grass grow at least 6 inches tall or adding a layer of mulch or straw to help insulate and retain heat. As always, limit any traffic on the system to lawn cutting activities and certainly never allow a vehicle or other large objects to drive or park on or near it as any damage can be quite expensive. Additionally, never add anything to your system for additives or anti-freeze solutions. These are unnecessary and even harmful to the system.

Any questions regarding building projects for your home or property can be directed to:

Andy Schreder, Building Official

Ph: 763-235-2317

Email: aschreder@stfrancismn.org.

Accuracy-Efficiency-Uniformity

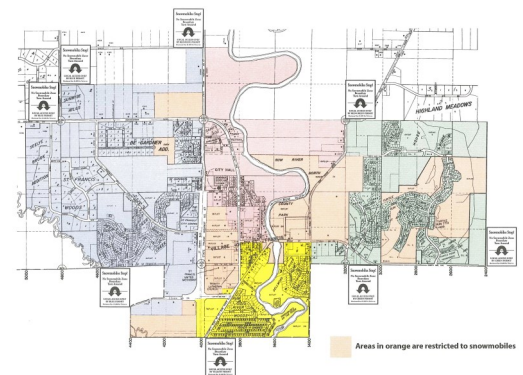
CALL BEFORE YOU DIG
Gopher State One Call
Metro: 651-454-0002
MN toll free 1-800-252-1166
www.gopherstateonecall.org

Snowmobile Rules - Summary

An annual permit must be purchased from the police department in order to ride a snowmobile in the local access areas of St. Francis. The cost for the permit is \$15. A color is assigned to the permit holder that is based on the address of the permit holder. The permit holder may take the most direct route from the primary residence to the state trail within the colored zone. Driving outside the colored zone or in the orange zone is not permitted. The local access sticker must be placed on the hood, visible from the left side. The year sticker must be placed directly below the local access sticker.

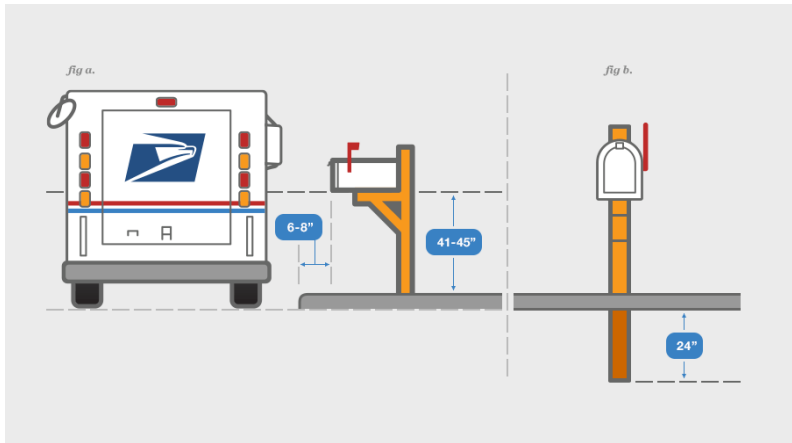
While in the local access areas, the operator shall not exceed 20 mph. Snowmobiles shall travel on the right side of the paved road within the curb line while in urban areas and within the curb point while on unpaved roads.

Please see www.stfrancismn.org regulations for a map and full list of rules and summary.



Winter Snow Tips

- ◇ When shoveling your driveway apron, shovel the snow to the right of your driveway if you are looking at the street. It will reduce the amount of snow in your driveway when the plow comes by.
- ◇ It is illegal to blow, shovel, or push snow from your driveway into the street. Doing this will also make the snow end up back in your driveway from the plow.
- ◇ Please help keep fire hydrants clear next to your home.
- ◇ Keep the area around and behind your mailbox clear of snow, this allows room for more snow without it piling up.
- ◇ The image below describes USPS requirements for your mailbox using these requirements can help reduce the chances of your mailbox being damaged:



- ◇ Placing wooden lath along your property helps the plow driver determine where the edge of the road is and helps prevent damage to the your property.
- ◇ Do not place your garbage cans in the street. Make sure there is a spot for them on the edge of your driveway.
- ◇ Do not park your vehicle in the street—No parking is allowed on any city street during the months of November until May from 1 a.m. to 11 a.m., or during a snow event. A snow event occurs when there is a snowfall of 2” or more and ends when the roads have been cleared to full width. Violators will be towed at the owner’s expense.

For concerns with county roads...

such as Bridge Street NW and Ambassador Blvd NW, please contact the Anoka County Highway Department:

Ph: 763-862-4200

Online: anokacounty.us/307/HighwayDepartment

Dead Animals

This time of year, we see more dead animals on the side of the roads than any other time of year. This unfortunately attracts more animals looking for an easy meal. Animals like coyotes, vultures, hawks and eagles.

What happens if you find a dead animal on the road?

Please report road kills on Anoka County roads to Anoka County Highway Department.

Road kills on St. Francis city roads call 763-233-5200.

What if you find a bald eagle on the side of the road?

Call your local DNR office and let them know where it is located. Possession of any parts of a bald eagle carcass including feathers is illegal. The dead eagle should be reported to the local DNR. The DNR ships the eagle to the National Eagle Repository in Colorado. They will take inventory of the animal then distribute the feathers and parts to Native Americans who use the feathers for religious ceremonies.

Anoka County

www.anokacounty.us

763-421-4760

Isanti County DNR

763-689-7100

Anoka County DNR

763-432-0833

Chamber Currents



A publication of the St. Francis Area Chamber of Commerce, St. Francis, Minnesota

WINTER 2015

Board of Directors

PRESIDENT

Joe Raus (through 2016)
Premier Specialties
612-412-9079

VICE PRESIDENT

Lindsey Johnson (through 2016)
St. Francis Physical Therapy
763-753-8804

TREASURER

Kerby Scherer (through 2015)
Subway
763-228-1215

SECRETARY

Janice Audette (through 2016)
The Courier, ISD 15
763-753-7032

DIRECTORS

Joe Buhn (through 2017)
The Refuge Golf Club
763-753-8383

Amy Lazere (through 2015)
Coldwell Banker Burnet
763-213-3177

Eric Schmoll (through 2017)
American Mortgage &
Equity Consultants, Inc.
763-301-0530

Jennifer McDonough
(through 2015)
St. Francis Fire Department
763-568-1719

Sam Schudi (through 2017)
Pillar Signs and Graphics
763-432-3481

St. Francis Area Chamber of Commerce
Annual Dinner
Friday, January 29, 2016
Social Hour with Free Beer 6:00 p.m.
Dinner & Wine Tasting 7:00-8:00 p.m.
The Refuge Golf Club
Oak Grove
Bingo, raffles, prizes and fun!
Formal invitation to follow.
Open to St. Francis Area Chamber of Commerce members, guests and the general public.
For more information or if you would like to make a donation for raffles and prizes please contact the St. Francis Area Chamber of Commerce at chamber@stfancischamber.org or call 763-438-5163

Chamber Welcomes New Administrative Assistant

Kristina Dahlin

SFACC Administrative Assistant

It's an exciting time to be a part of the St. Francis Area Chamber of Commerce (SFACC) and this growing community! I'm anxious to be your administrative assistant and partnering with our members, to promote the St. Francis Area.

I'll also work hard to help build our members' businesses with the many opportunities we offer. Our members

produce the driving force behind the success of the Chamber and represent businesses in our expanding circles of regional activity.

If you'd like more information about joining the SFACC or how to maximize your membership, please contact me at 763-438-5163 or chamber@stfrancischamber.org.

Thank you and I look forward to meeting you.

Mission Statement

The St. Francis Area Chamber of Commerce serves the needs of its membership in working toward the common goal of a growing, healthy business environment and community as a whole.

Member Events



Save the date for the celebration of St. Francis Pioneer Days June 3-5, 2016.

Attention to all home and community businesses, non-profits and crafters: Be an Expo vendor in Community Park during Pioneer Days and showcase your business and services to St. Francis and surrounding communities.

Watch for more information in the coming months or email chamber@stfrancischamber.org to be on mailing list.

Save the Date!

December 16 Board Meeting
January 20 Board Meeting
January 29 Chamber Annual Dinner

Board meetings are held the third Wednesday of each month, 11:00 a.m., St. Francis Community Center.

Join us for the Chamber breakfast monthly networking with Chamber members and local businesses, held the second Wednesday of each month at Beef 'O' Brady's in St. Francis, 8:00 a.m. Let us know if you would like to speak about your business at the breakfast.

Visit stfrancischamber.org for details.

Stay in the know with Chamber eNews

Sign up for Chamber eNews to stay current on the latest Chamber and community news and events. To receive Chamber news and information in your in box, send an email to chamber@stfrancischamber.org to request to be added to our email newsletter list.

Welcome to the newest members to the St. Francis Area Chamber of Commerce: Cellular Only, Nowthen Plumbing.

For information on how to become a member and the benefits of joining the St. Francis Area Chamber of Commerce, call 763-438-5163.



St. Francis Area Chamber of Commerce Members

Support these area businesses who support the community through their Chamber membership. Chamber membership is open to any area business, organization or individual. Visit www.stfrancischamber.org to find out what membership can do for you!

ABC Newspapers	Collision 2000, Inc.	McDonald's	St. Francis Physical Therapy
Ace Solid Waste, Inc.	Connexus Energy	Minnesota Star Realty	St. Francis True Value Hardware
Advanced Automotive Care	County Market	North Anoka Plumbing, Inc.	St. Francis United Methodist Church
Air Comfort Heating and Air Conditioning, Inc.	Crown Electric, Inc.	Northstar Outdoors, Inc.	St. Francis Veterinary Clinic
American Family Insurance—Mary Dresch	Custom Catering	Nowthen Plumbing	Steve's Collision
American Mortgage & Equity Consultants, Inc.	Dairy Queen/Orange Julius	Opp Family Chiropractic, P.A.	Subway Oak Grove
Annabelle's Photography	Dave's Heating and Air Conditioning	Patriot Lanes Bar & Grill	Subway St. Francis
Anoka Hennepin Credit Union	Dennis Philp Construction, Inc.	Pillar Signs and Graphics	T & W Adventures
Anoka Ramsey Community College	Dusty's Drain Cleaning, Inc.	Pizza Hut	TC Net-Works, Inc.
Anytime Fitness	Edward Jones Investments	Premier Specialties	That Other Thrift Store
Barna, Guzy & Steffen, LTD	Elaine M. Mustari, CPA	Printing Unlimited	The Bridge
Beef 'O' Brady's	Fairview Health Services	ReMax - Larry D. Anderson	The Courier/ISD 15
Bolton and Menk, Inc.	Gerdin Auto & Tire	Restyle & Consignments LLP	The Dugout Bar & Grill
Captain's on Long Lake	Gold Star Kennels	Rum River Tree Farm	The Oaks of Lake George
Casey's General Store	Greater Midwest Realty	Sara Sauer C.P.A., LLC	The Ponds Golf Course & Restaurant
Cellular Only	Hidden Haven Golf Club	Schroeder's Creekside Stables	The Refuge Golf Club & Restaurant
Central Heating & Cooling, LLC	Highland Money Management	St. Francis Bottle Shop	Trinity Lutheran Church & School
City of St. Francis	Isanti Retail Meats, LLC	St. Francis Collision & Glass	Tru-Cut Lawns, Inc.
Coldwell Banker Burnet—Amy Lazere	Joslin & Moore Law Office, P.A.	St. Francis Community for Drug Awareness	Village Bank
	Lakeside Cabinets and Woodworking	St. Francis Dental Care, P.A.	
	Mansetti's Pizza & Pasta	St. Francis Fire Department	
		St. Francis Insurance Agency	
		St. Francis Lions	

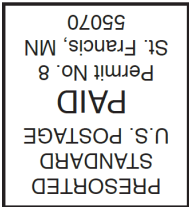


Chamber Currents is published by the St. Francis Area Chamber of Commerce

PO Box 655, St. Francis, Minnesota, 55070 • 763-438-5163 • www.stfrancischamber.org • chamber@stfrancischamber.org



ECRWSS POSTAL PATRON



Winter 2015 Newsletter
City of St. Francis
23340 Cree Street NW
St. Francis, MN 55070
city@stfrancismn.org
www.stfrancismn.org

Winter 2015 Calendar of Events

December Events

- December 5: Breakfast with Santa! @ SF American Legion 9AM
- December 5: A “Gathering of Friends” this holiday season @ Captains on Long Lake 7PM
- December 7: City Council Meeting @ ISD #15 Central Services Center 6PM
- December 9: Santa's Neighborhood Fire Truck Route 6PM
- December 10: Santa Visits St. Francis @ Police Department 5-7PM
- December 16: Planning Commission @ ISD #15 Central Services Center 7PM
- December 21: City Council Meeting @ ISD #15 Central Services Center 6PM

January Events

- January 4: City Council Meeting @ ISD #15 Central Services Center 6PM
- January 19: City Council Meeting @ ISD #15 Central Services Center 6PM
- January 20: Planning Commission @ ISD #15 Central Services Center 7PM

February Events

- February 1: City Council Meeting @ ISD #15 Central Services Center 6PM
- February 16: City Council Meeting @ ISD #15 Central Services Center 6PM
- February 17: Planning Commission @ ISD #15 Central Services Center 7PM

Wooden Laths

Wooden laths are available to interested residents at City Hall and the Police and Public Work Facility. This lath should be used to mark the edge of the pavement on city streets before the first snow plow event.

Freddy the Fish

Check out this quick video to help us keep our stormwater clean and safe!



<https://youtu.be/jjPflHjbdco>

New Website

A new website has been launched for a user-friendly experience. Check it out today at stfrancismn.org!

